

IQ2® programming software available.

Programming software for the intelligent WhisperShade® IQ2 Electronic Drive Unit is available at no charge to dealers who attend MechoSystems intermediate (201) training.

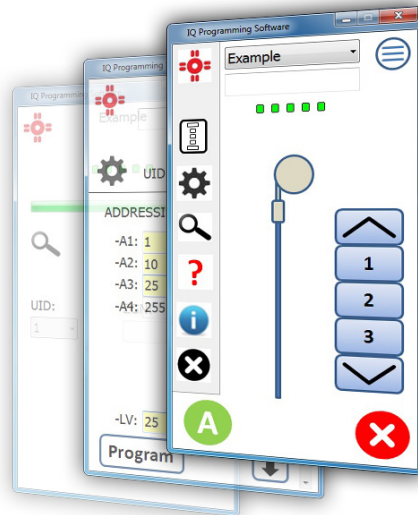
This new tool allows dealers to connect a computer directly to an IQ2 roller-shade network and, in a matter of minutes, change the way shades are grouped and controlled.

That's because IQ2 is an addressable technology. Network communication is a function of the simple assignment of addresses, which determine who gets what command.

IQ2 programming software lets each IQ2 be assigned as many as four addresses (e.g., individual, group, floor, master).

In addition, it also allows the user to change:

- Any of the three intermediate stops.
- The switch personality (e.g., to act as a Bed Interface Unit).
- The polarity of the switch.
- To uniform mode.
- To maintenance mode



IQ2 programming software user interface.

By enabling dealers to create their own control scenarios based on project needs, this tool reduces labor, rewiring costs, and the need to rely on Tech Support.

Please [contact your local MechoSystems representative](#) if you are interested in training.

[Click to view past issues of MechoNews.](#)