

Spotlight on SolarTrac® Projects

MechoSystems' SolarTrac System is the ultimate in automated shading systems and increases energy efficiency while providing building occupants with a comfortable environment and views to the outside.

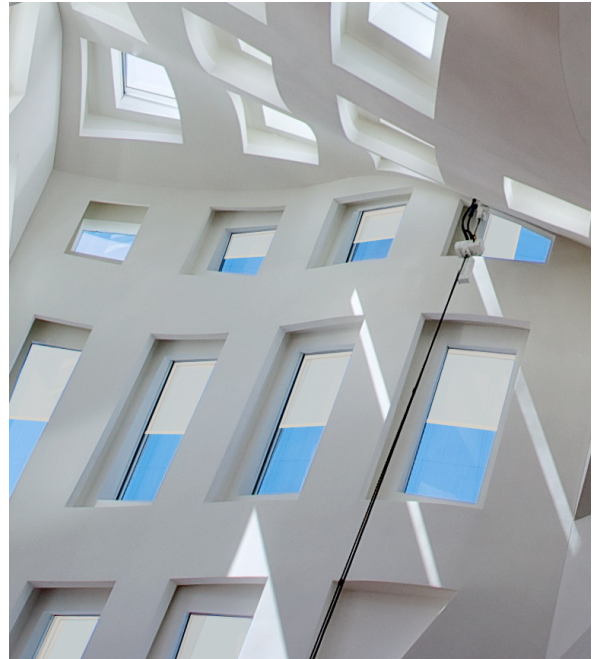
The system:

- Tracks the sun and sky conditions, automatically adjusting shades to protect against solar-heat gain, brightness, and glare.
- Saves up to 70% in lighting costs when used with the [MechoLux®](#) daylighting system.
- Increases opportunities for natural light, which decreases the need for artificial light.
- Reduces solar-heat gain, which lessens air-conditioning needs.
- Alleviates brightness and glare, which provides a more comfortable environment.

The popularity of the SolarTrac System is evident in notable projects such as California's upgraded Gregory Bateson State Office Building, The New York Times Headquarters, and the LEED® Platinum-rated U.S. Green Building Council in Washington, D.C.

A complete list of 2007–2011 projects and more information is available at:

mechosystems.com/SolarTrac



Cleveland Clinic Lou Ruvo Center for Brain Health, Las Vegas
Architect: Gehry Partners, LLP

[Click to view this or past issues of MechoNews.](#)