

MechoNet™ Network Interface (MNI)

One network. Many devices.

Model Numbers

MNI-RJ (RJ45 Motor Ports)

IMNI 0001 TP AS

IMNI 0004 TP AS (with J-Box)

MNI-TB (Terminal Block Motor Ports)

IMNI 0002 TP AS

IMNI 0005 TP AS (with J-Box)

Features

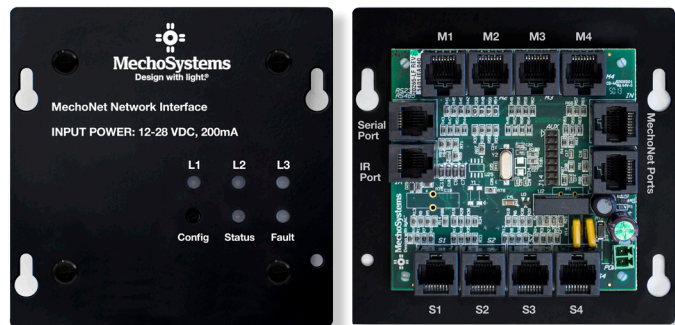
- Four motor ports bring low-voltage, dry-contact controlled shades, blinds, and draperies to MechoNet.
- Motor ports support up-down control and positioning for up to three presets via the switch ports, IR port, serial port, and MechoNet.
- Two models (MNI-RJ and MNI-TB) simplify motor wiring options.
- Four switch ports support economical low-voltage, dry-contact control of window coverings from IQ decorator switches, RF remotes, 3rd-party keypads, and relay controllers.
- Switch ports support a variety of 1-, 2-, 3-, and 5-button positioning-control switch configurations.
- IR port provides cost-effective wireless control.
- Serial port enables two-way integration with 3rd-party systems.
- Repeater mode extends MechoNet control to another 4,000 ft. (1,219m) of cable and 250 nodes.
- SunDialer® and SolarTrac® compliant.

Product Overview

A compact communication and control hub, the MNI centralizes the interface between MechoSystems' window-covering solutions and a variety of user-interface, control, and automation options across one network, called MechoNet.

Operation

Non-MechoNet equipped motorized shades, blinds, and draperies can be unified across the network using one of the MNI's four low-voltage motor-control ports.



A diverse assortment of user-control options are available through the MNI for any window covering attached to it or the network. Switches, keypads, touchscreens, remotes, or apps can all be employed through the MNI's four dry-contact switch ports, its IR port, or its serial port.

The serial port in particular supports two-way control over RS-232 and RS-485 to 3rd-party equipment such as Savant, Vantage™, Lutron®, WattStopper® and others to enable seamless and intelligent control of window coverings with lights, HVAC, and A/V.

Furthermore, the MNI promotes modular scalability for any project, enabling growth from single room or office solutions to integrated and automated, whole-building systems.

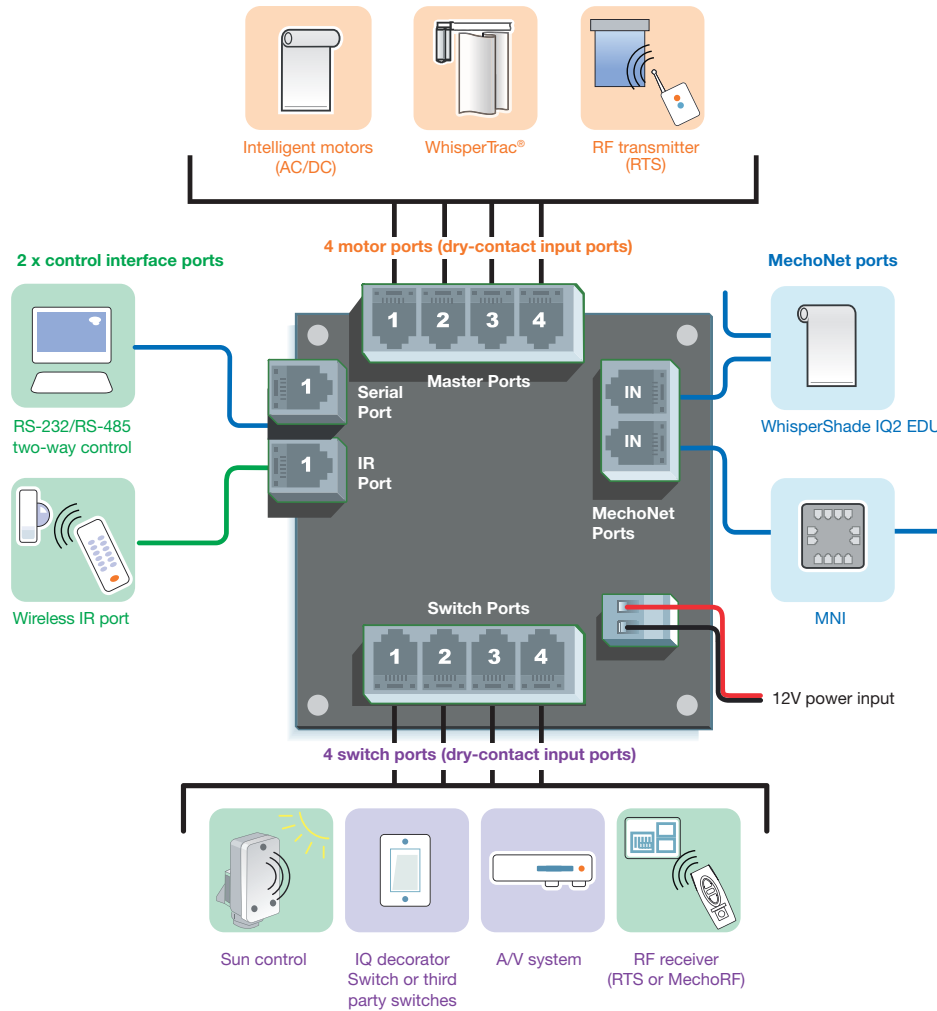
Applications

- Automated window-covering control across MechoNet for shades, blinds, and draperies.
- Integrated window-covering, lighting, A/V, and HVAC control through RS-232 and RS-485, IR, and dry-contact.
- Scalable automation-control solutions from single office to building-wide control via SolarTrac.
- Home- or building-control projects.

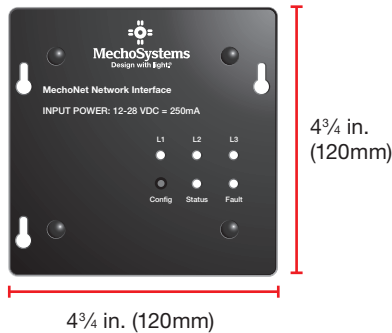


MechoNet™ Network Interface (MNI)

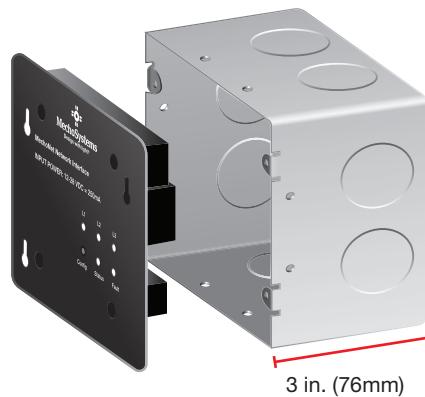
One network. Many devices.



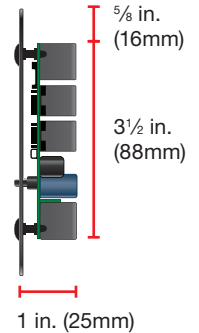
Top view



4¹¹/₁₆ in. (119mm) Junction box angle view



Side view



Corporate Headquarters
42-03 35th Street
Long Island City, NY 11101

T: +1 (718) 729-2020
F: +1 (718) 729-2941
W: mechosystems.com
E: marketinglic@mechosystems.com

